

TUNISIE

HAMMAMET

du 19 | nov.  
au 21 | 2021

4<sup>e</sup> édition

# AFRAMED 2021

VIH, Hépatites, Santé sexuelle  
Infections émergentes



[www.aframed2021.org](http://www.aframed2021.org)



# Prise de poids, complications métaboliques et ARV

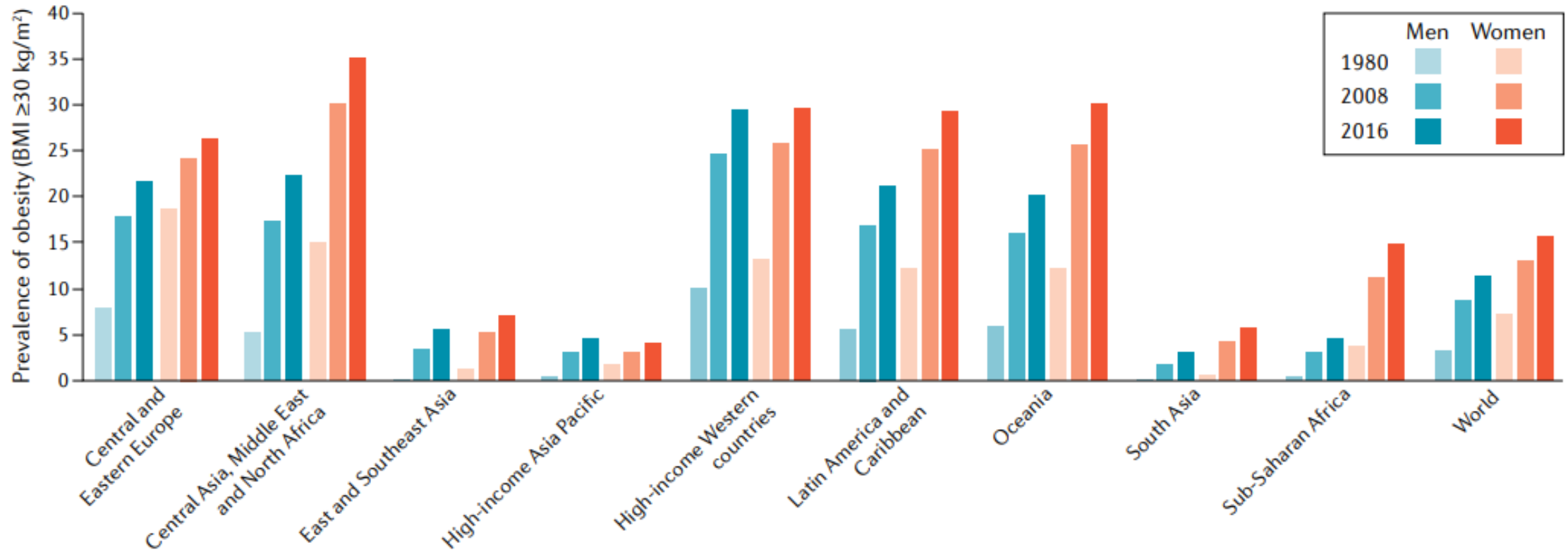
Gilles Wandeler

[gilles.wandeler@insel.ch](mailto:gilles.wandeler@insel.ch)

Hammamet, 20.11.21

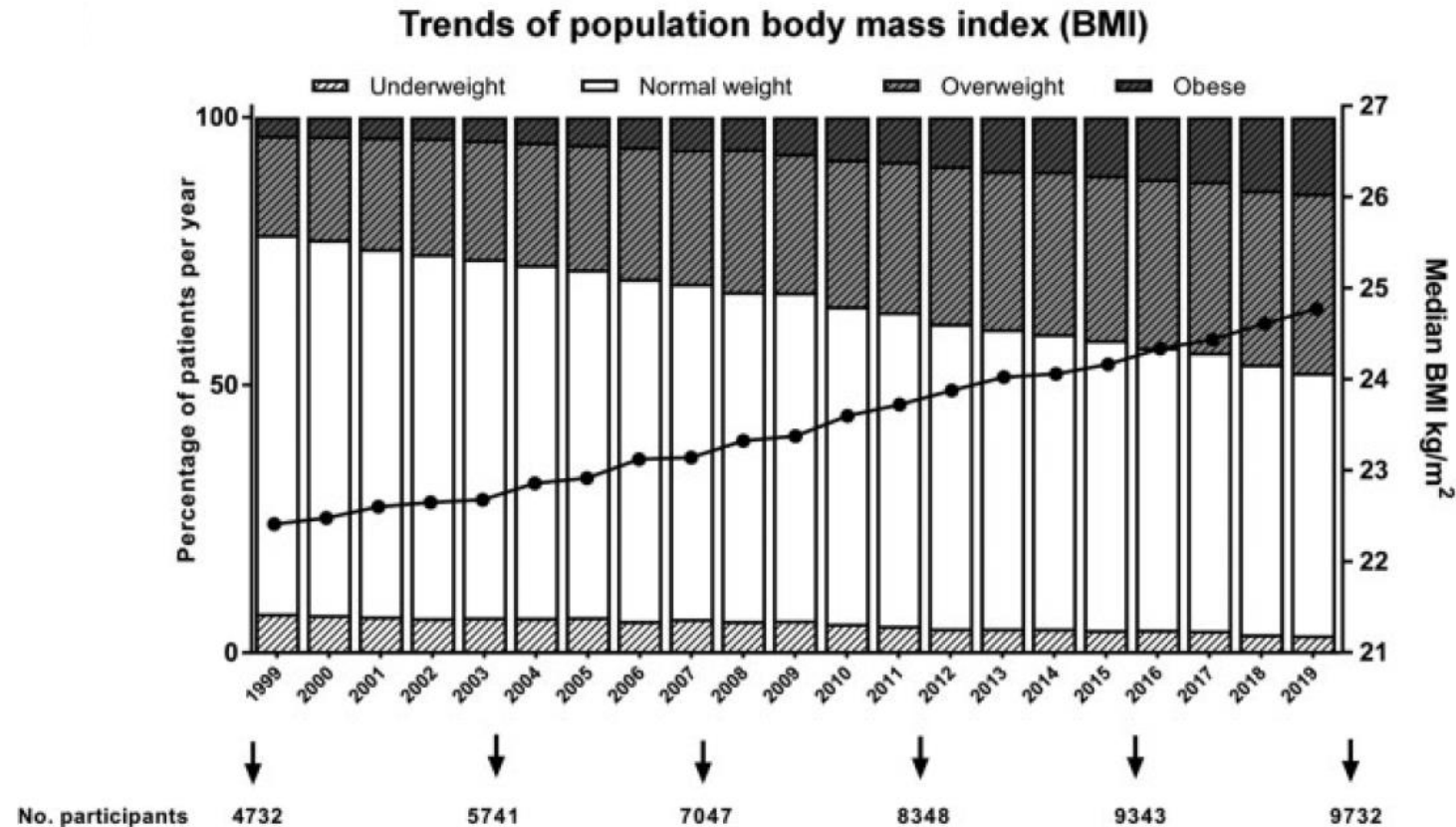


# *L'obésité en augmentation dans la population générale (NCD-RisC, n=129 mio.)*



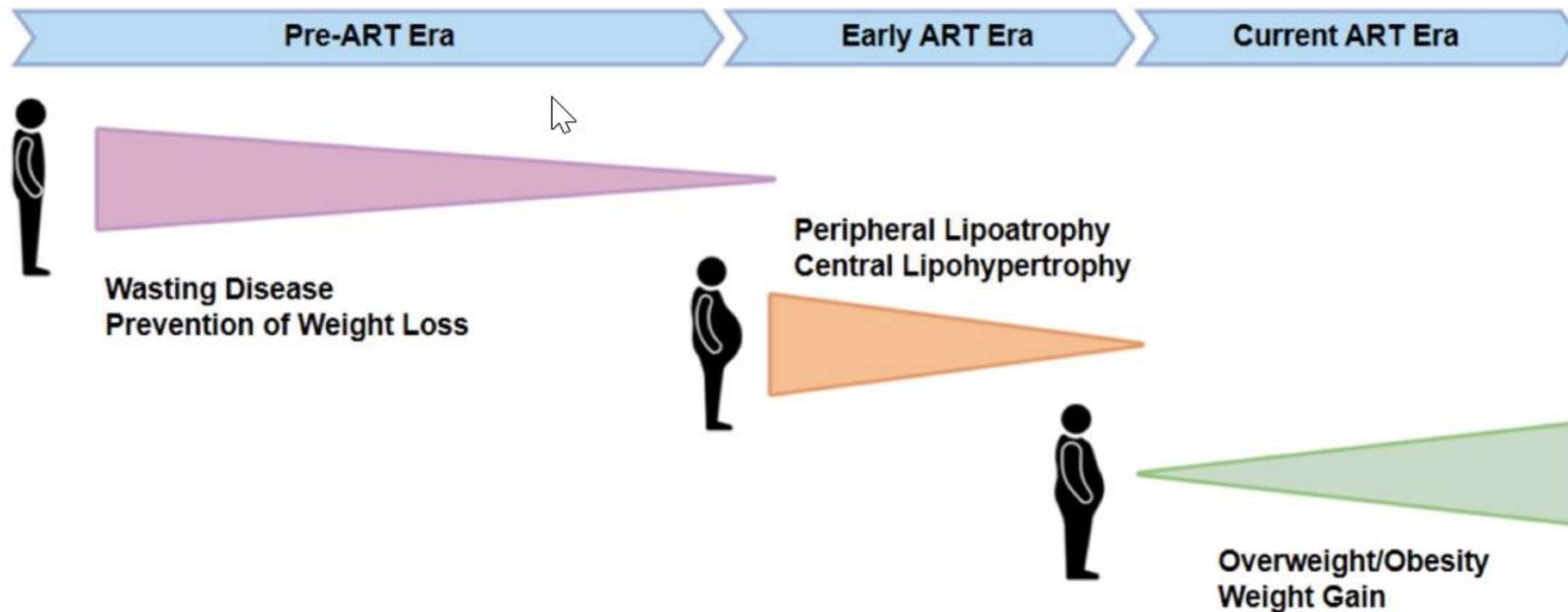


# L'obésité en augmentation chez le PVVIH (Cohorte VIH Suisse, n=20,000)



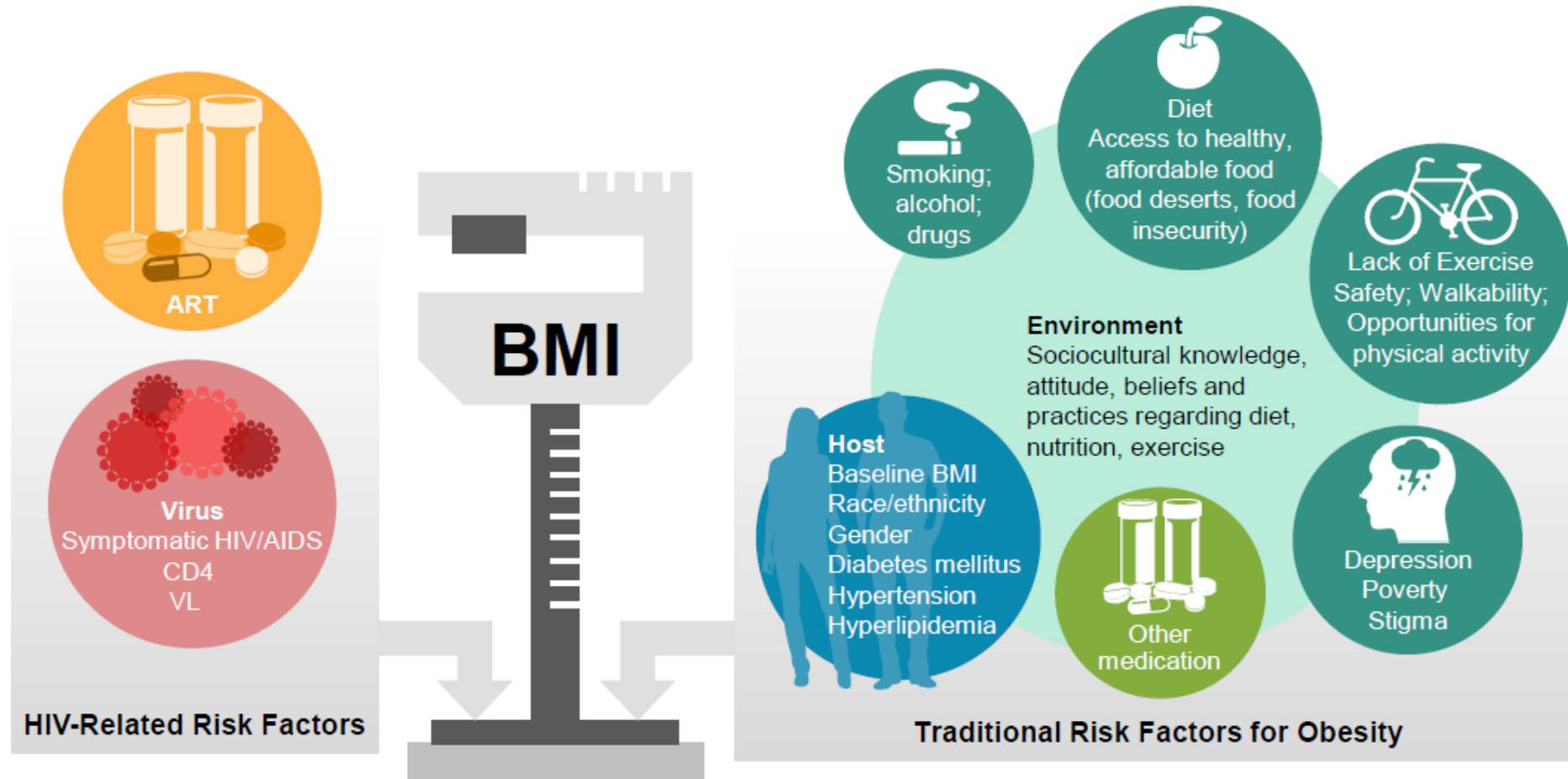


## Prise de poids et VIH: historique



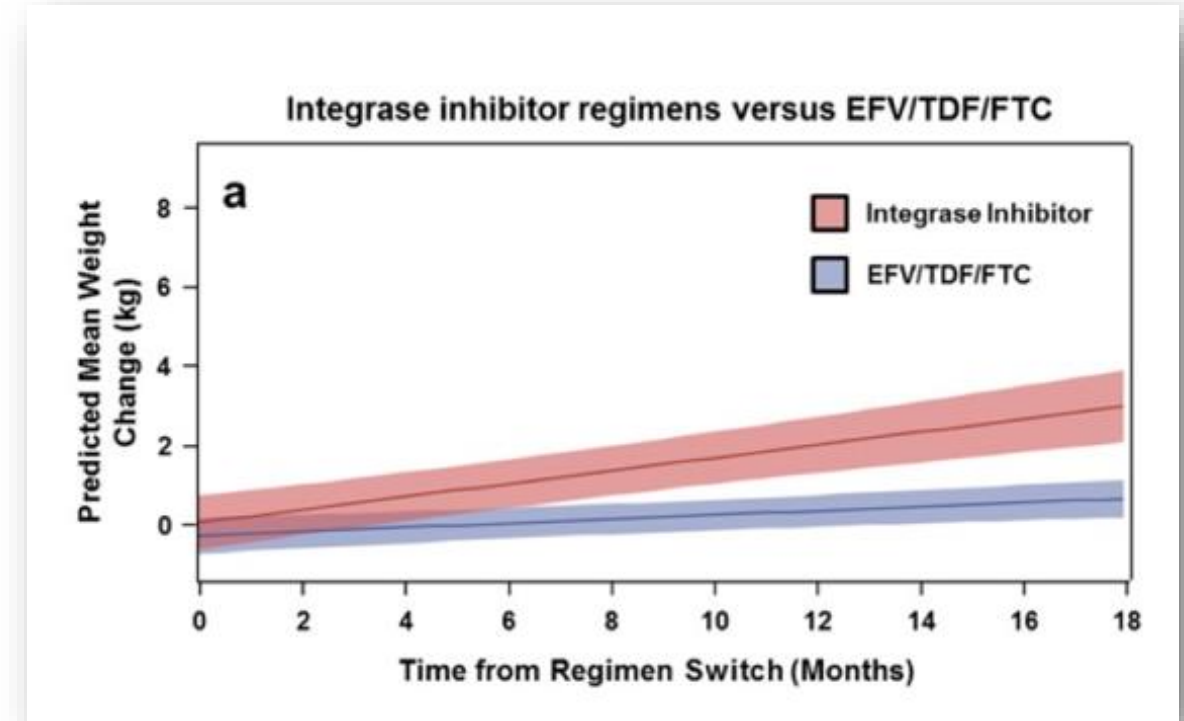
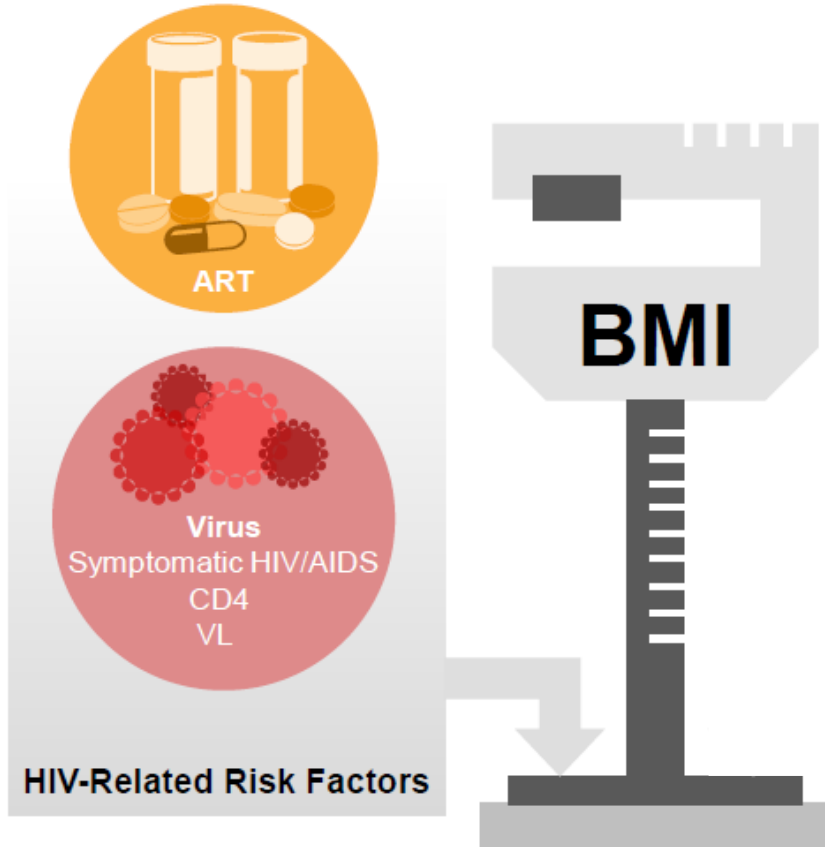


# Prise de poids et VIH: les facteurs de risque



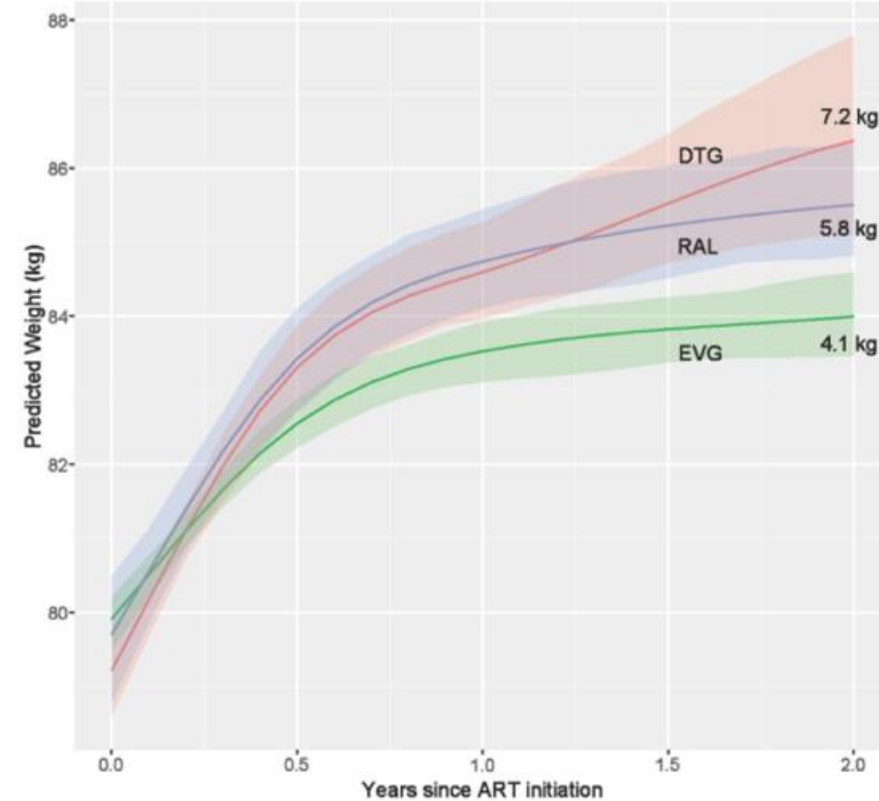
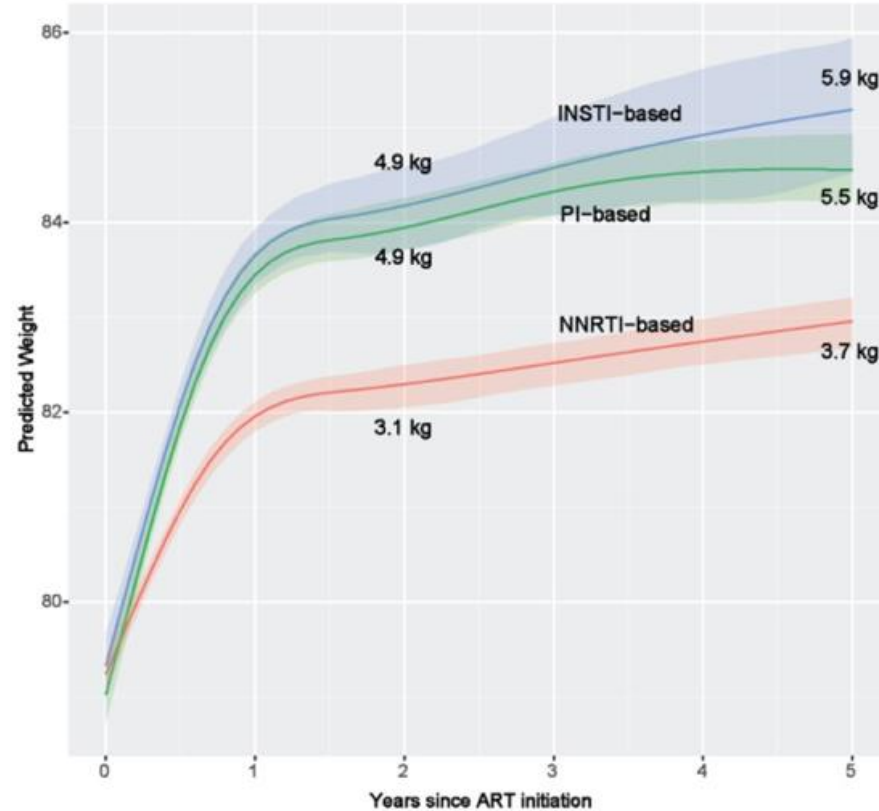


# Prise de poids et VIH: les facteurs de risque





## Prise de poids sous ARV chez PVVIH naïfs (NA-ACCORD, n=22,972, dont 4,190 sous InSTI)

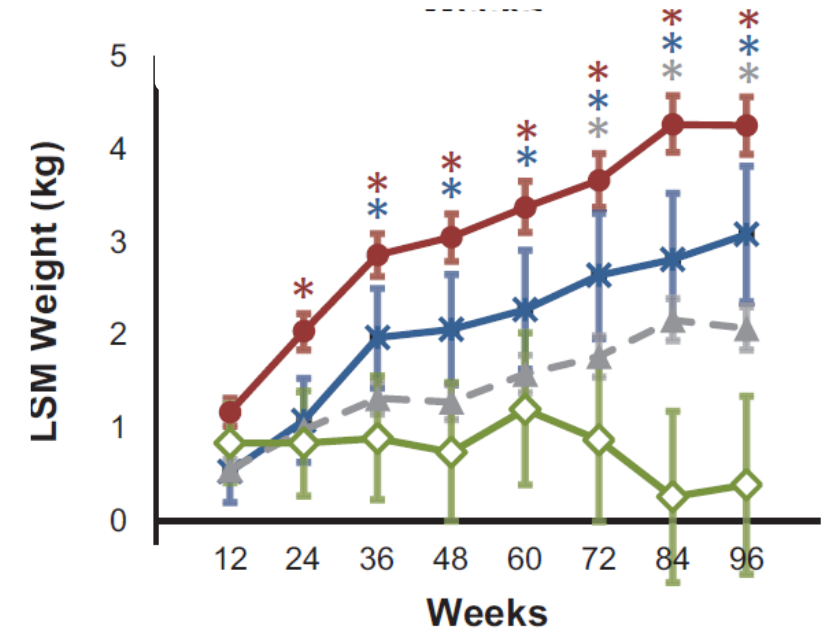
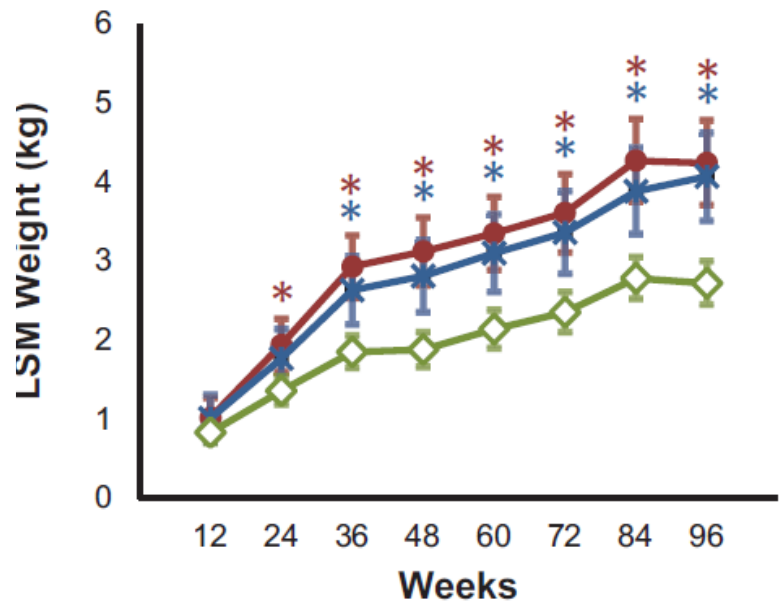
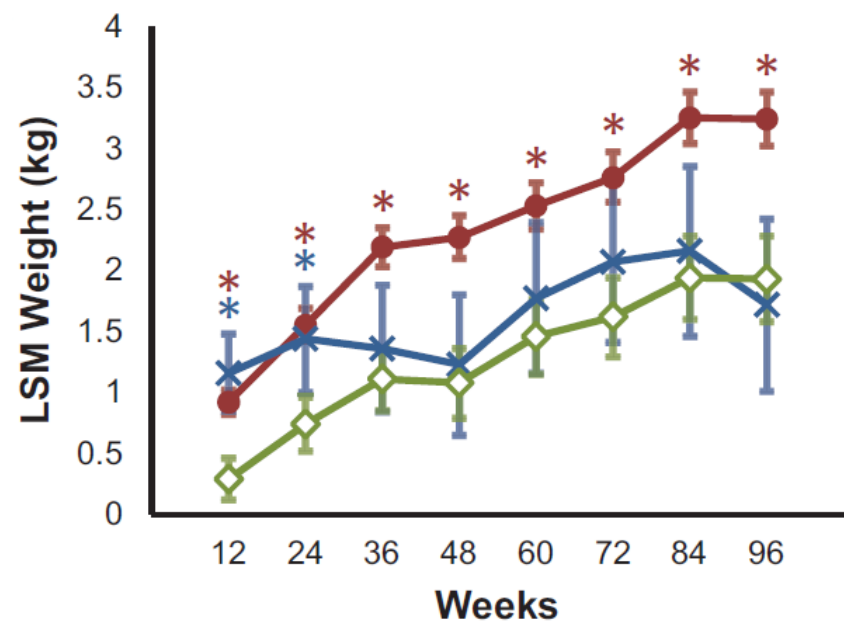






# Prise de poids sous ARV chez PVVIH naïfs

(Pooled analysis of 8 Gilead clinical trials worldwide, n=5,680)



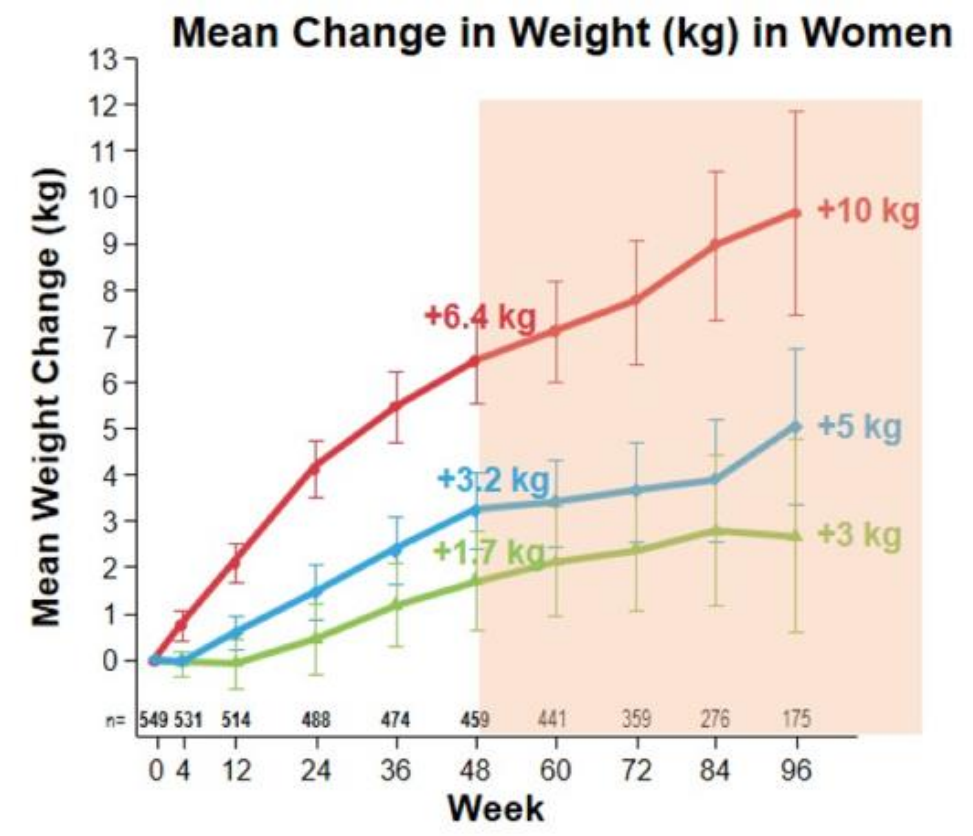
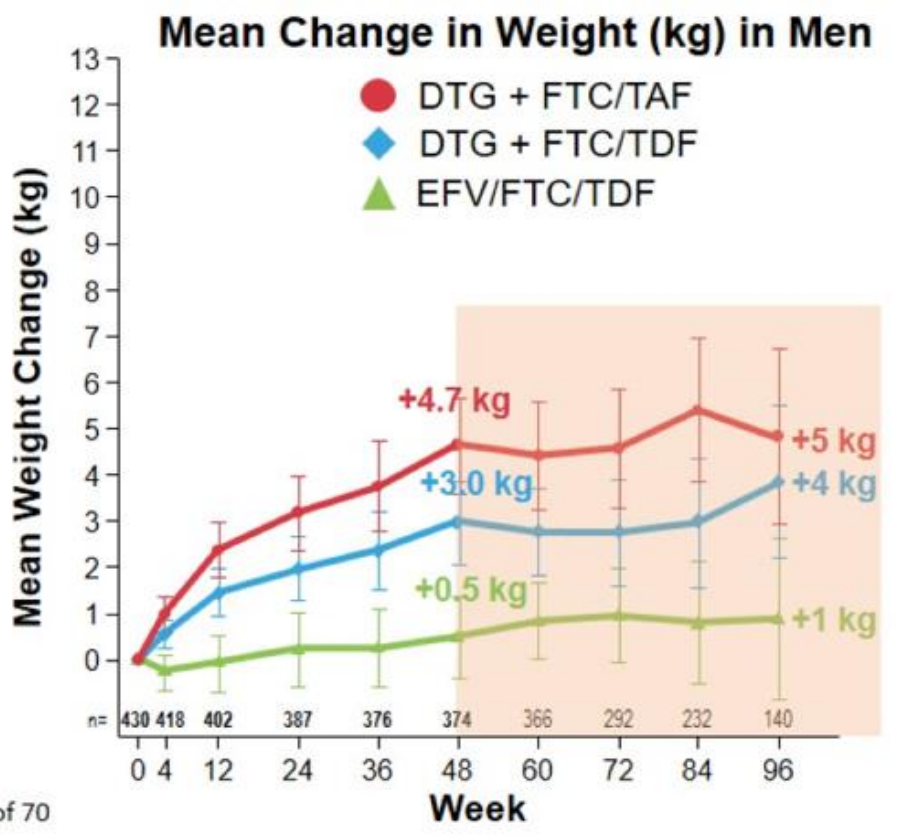
● INSTI  
● PI  
● NNRTI

● BIC  
● DTG  
● EVG/c

● TAF  
● ABC  
● TDF  
● ZDV

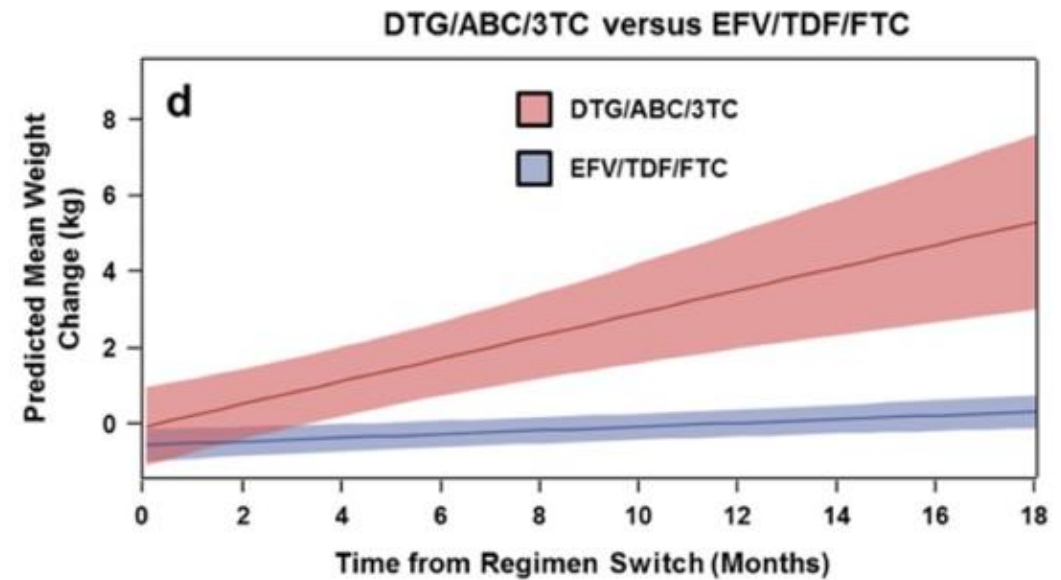
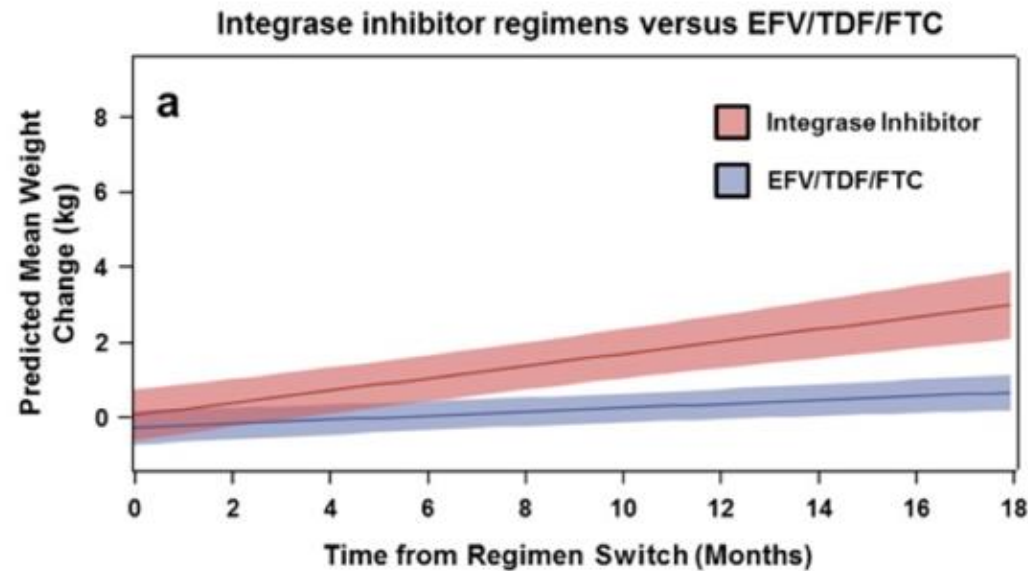


# Prise de poids sous ARV chez PVVIH naïfs (ADVANCE, Afrique du Sud, n=1,053)



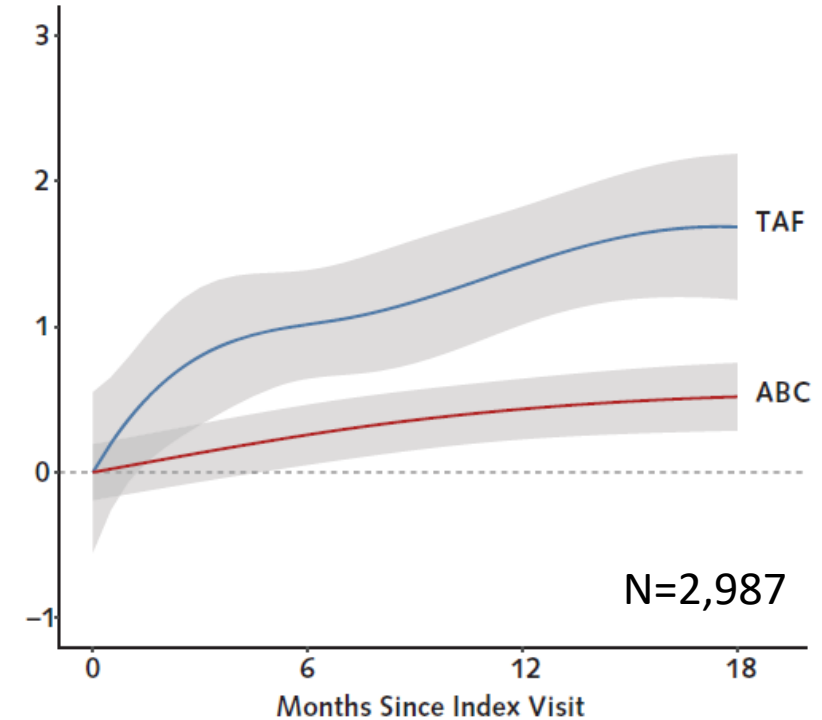
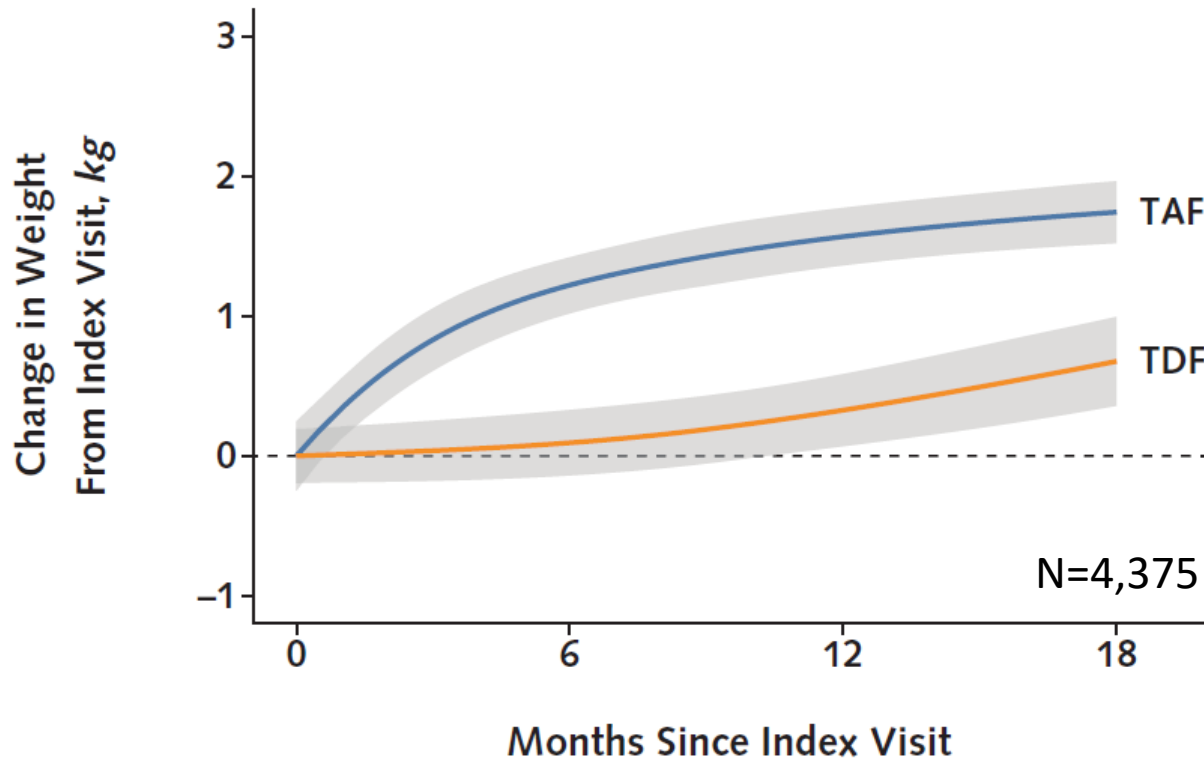


# Prise de poids sous ARV après un switch (USA, n=495 sous FTC/TDF/EFV, maintien vs. switch vers InSTI)





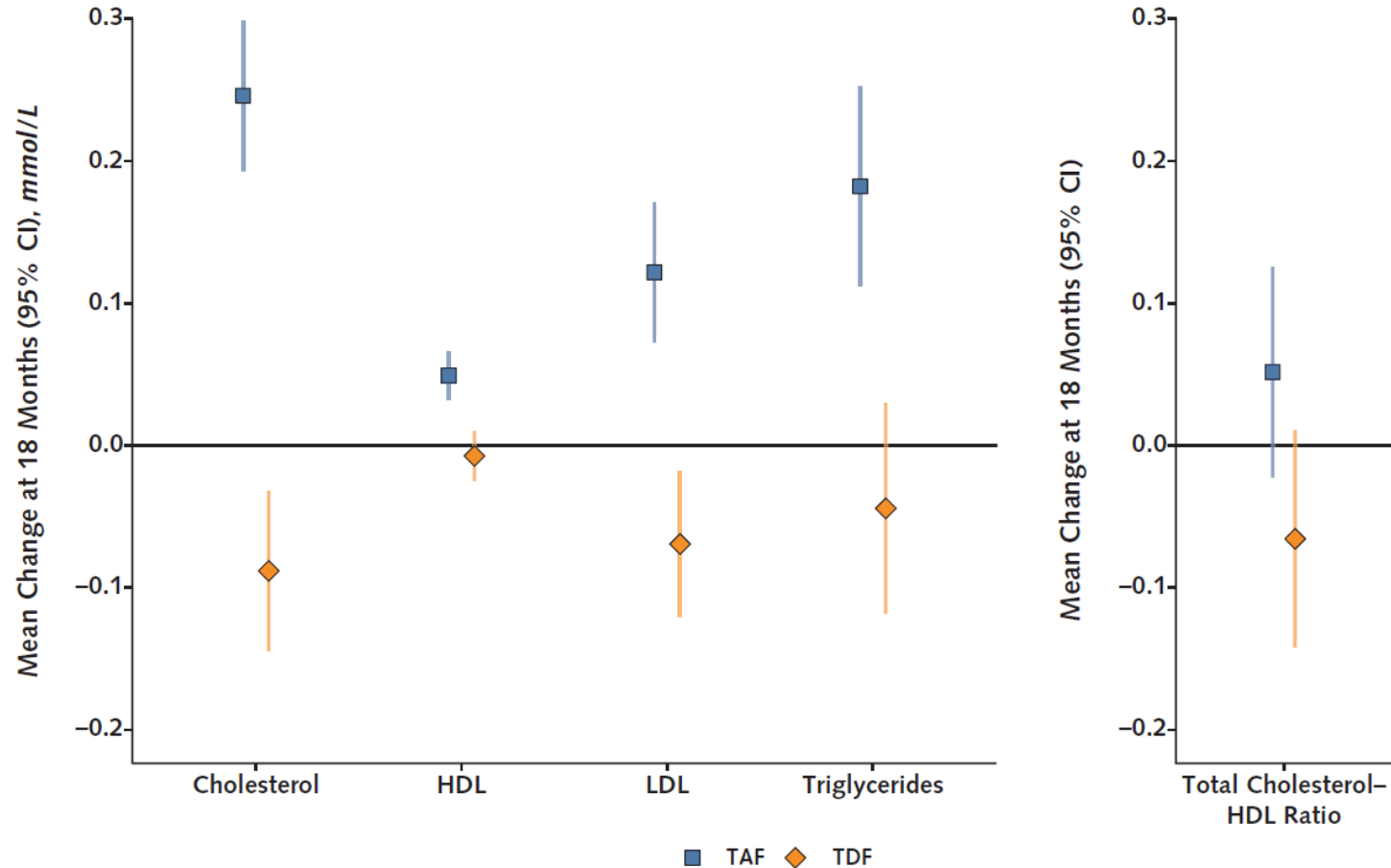
## Prise de poids sous ARV après un switch (Swiss HIV Cohort Study, n=4,375)





# TAF et lipides

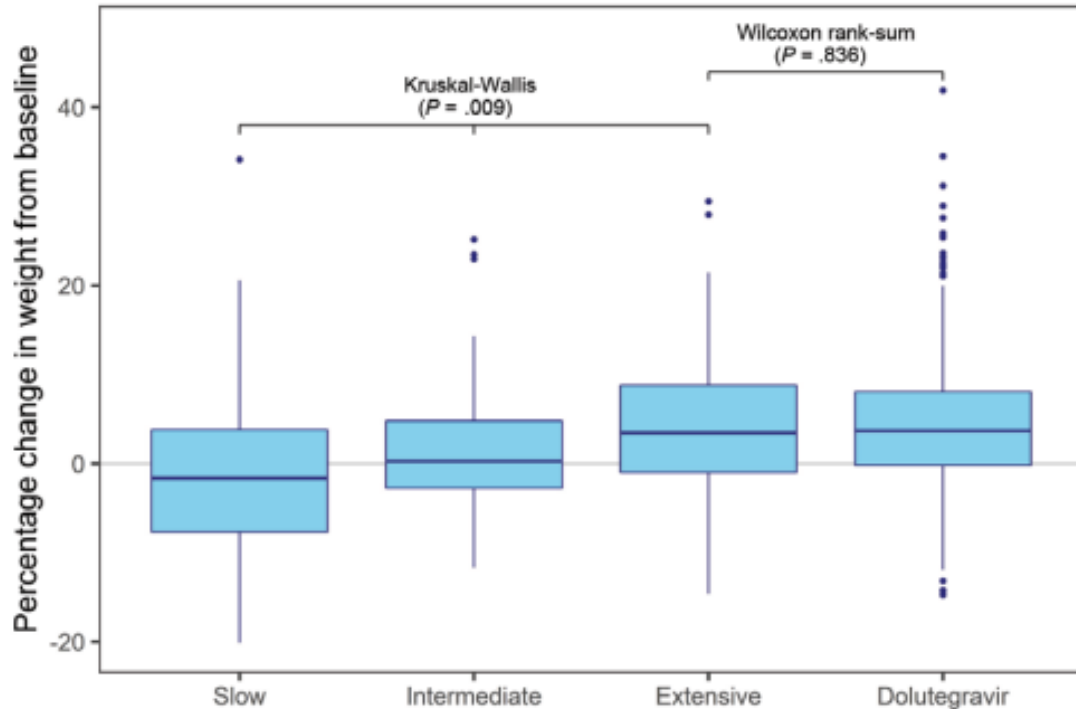
(Swiss HIV Cohort Study, n=4,375)



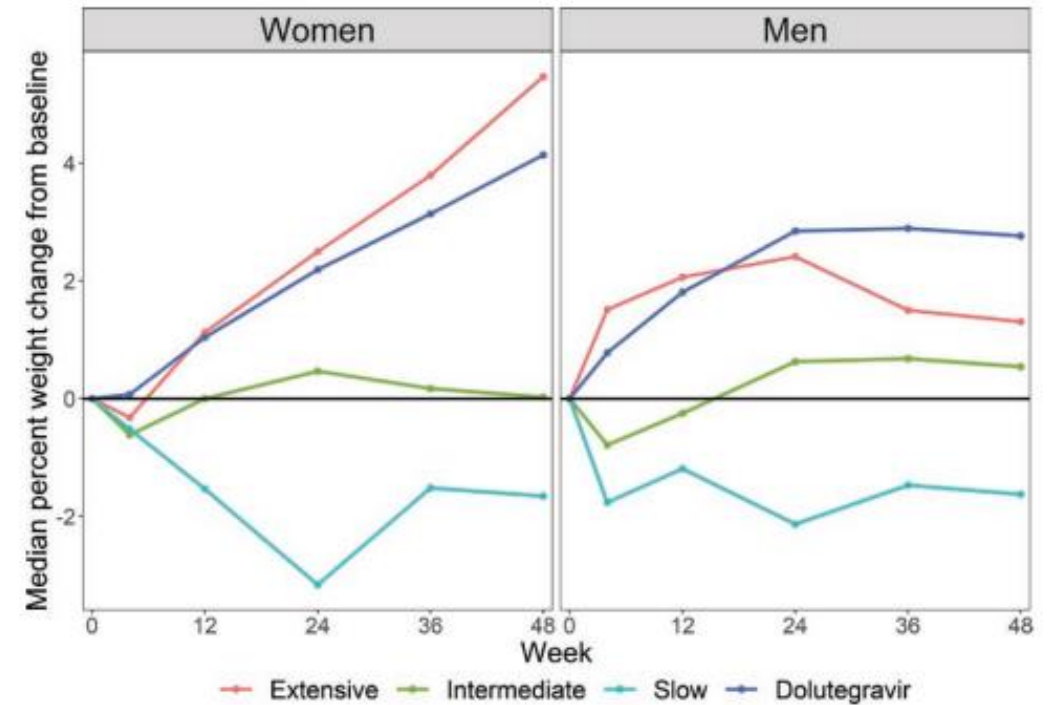


# Prise de poids sous ARV: quels mécanismes?

(ADVANCE, Afrique du Sud, n=510 with genetic consent)

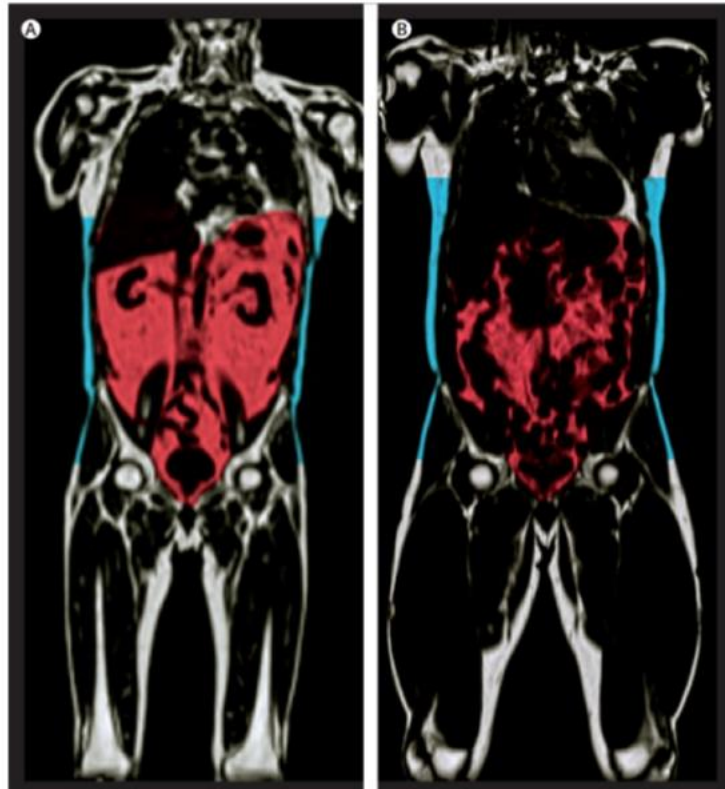


EFV metabolizer group based on CYP2B6 genotype





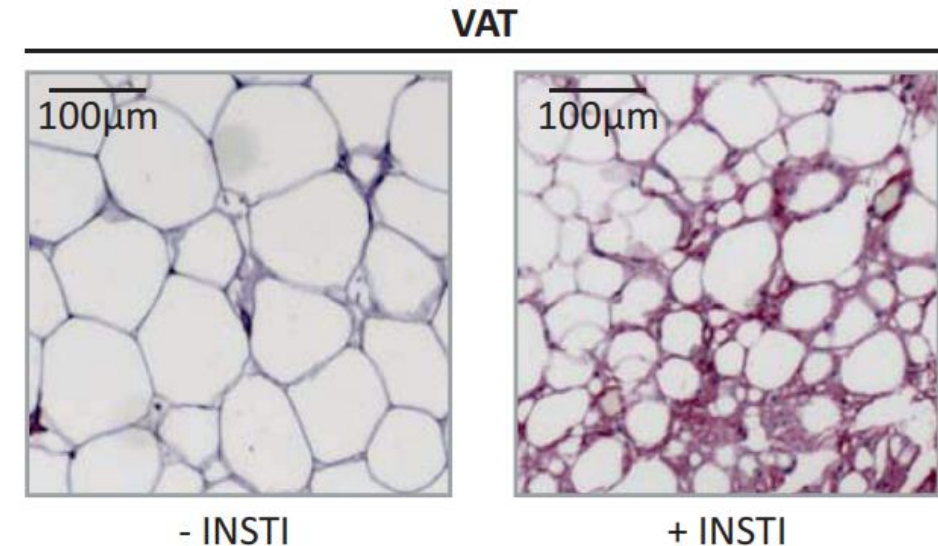
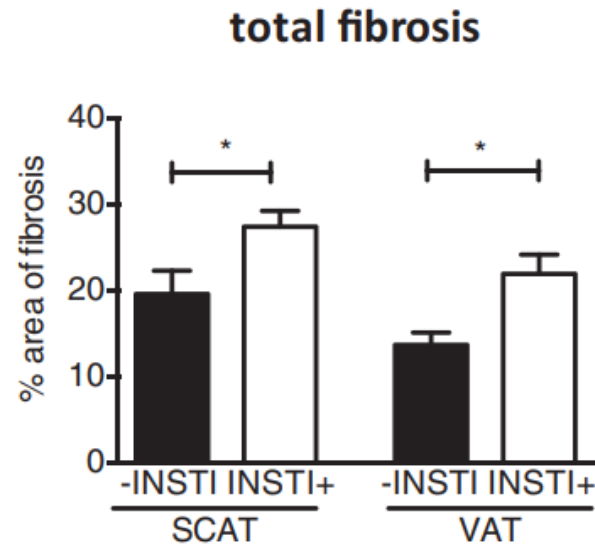
# *Tissu adipeux et ARV: distribution plus importante que quantité (France, n=19 PLWH undergoing bariatric surgery)*



67 y/o male

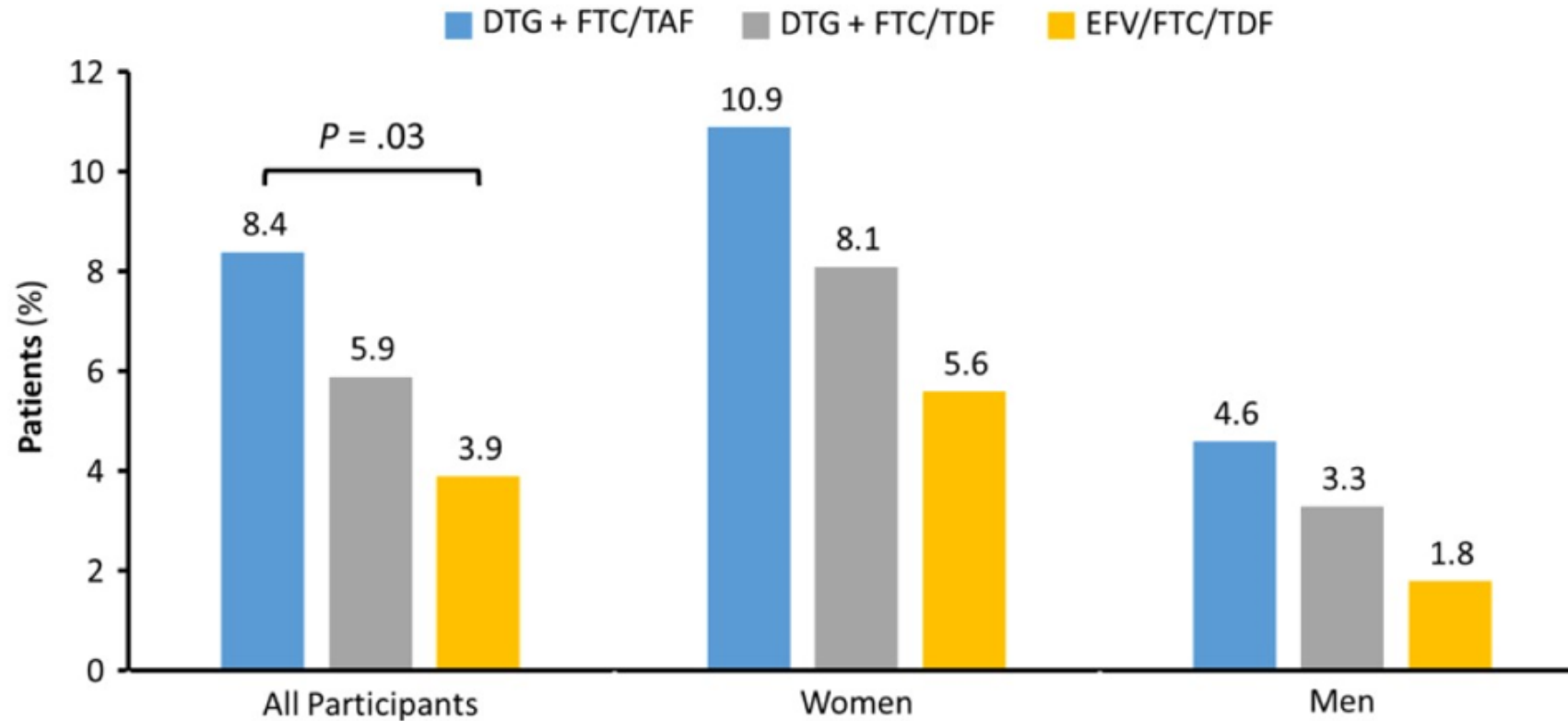
53 y/o male

BMI 25 kg/m<sup>2</sup> and VAT 2.6 L/m<sup>2</sup>    BMI 30 kg/m<sup>2</sup> and VAT 0.9 L/m<sup>2</sup>





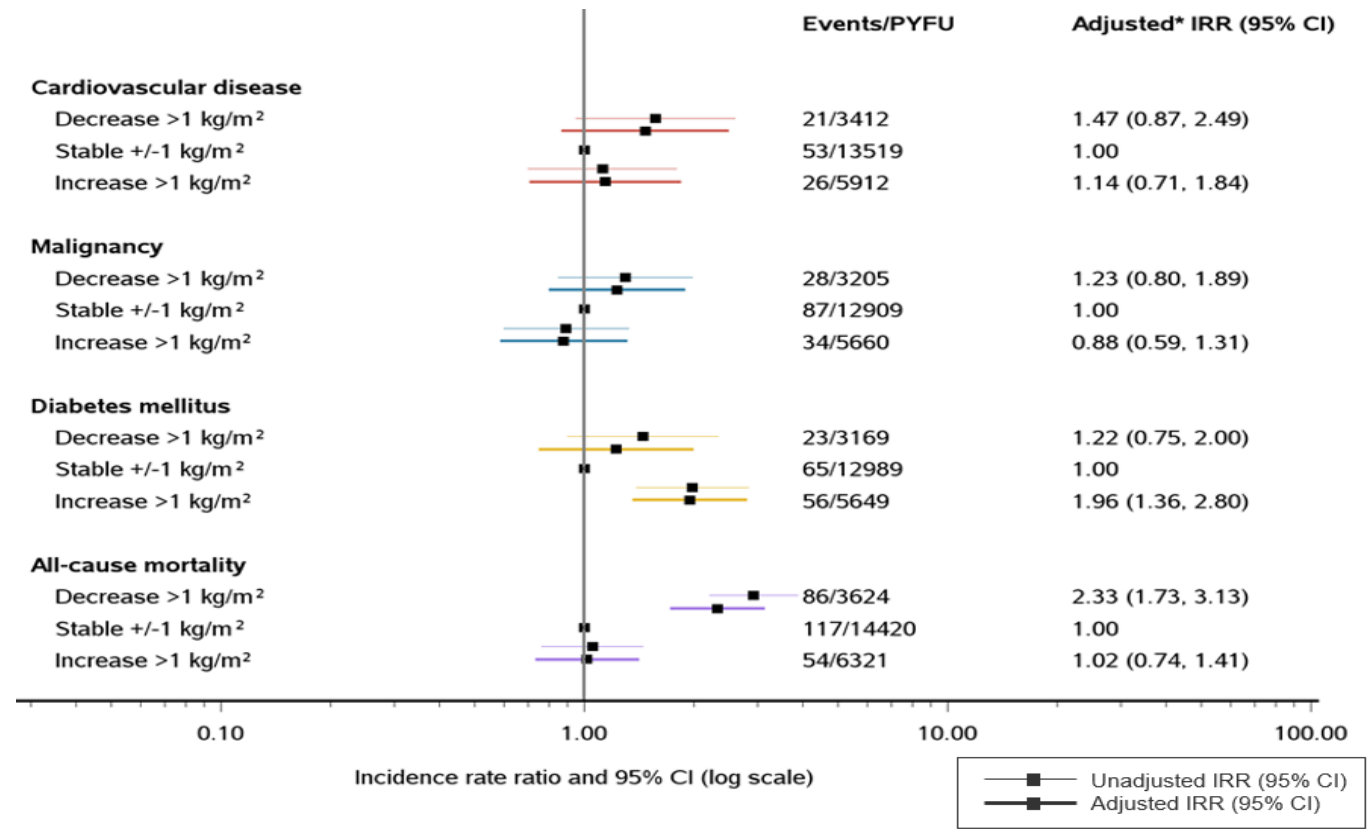
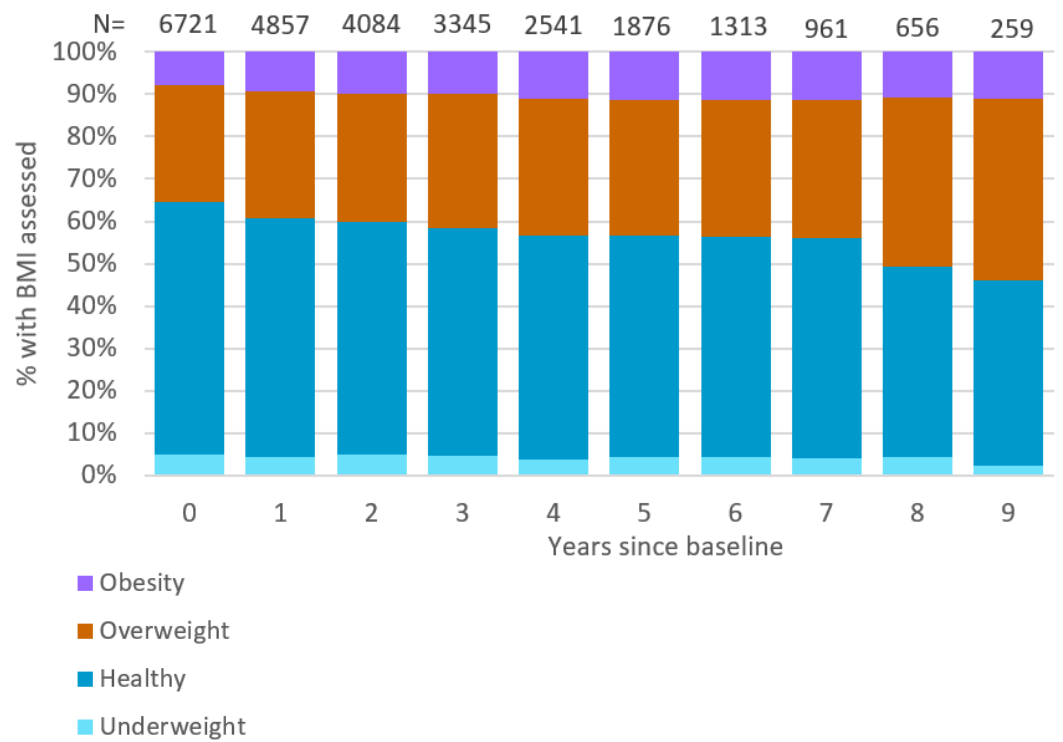
## Conséquences de la prise de poids sous ARV: Syndr. métabolique (ADVANCE, Afrique du Sud, n=1,053)





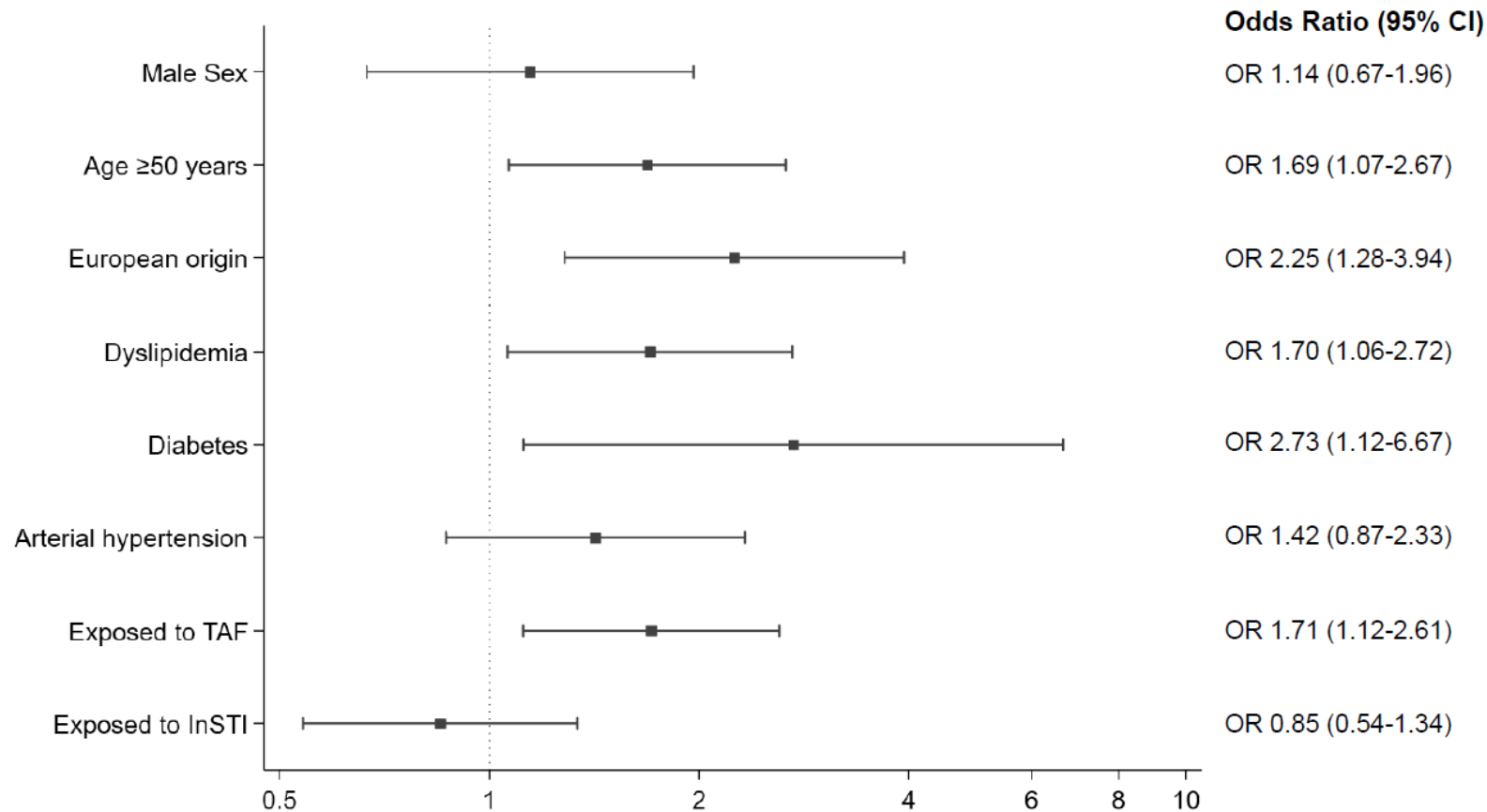


# Conséquences de la prise de poids sous ARV: Diabète (EuroSIDA, n=6,721, 41% sous InSTI)





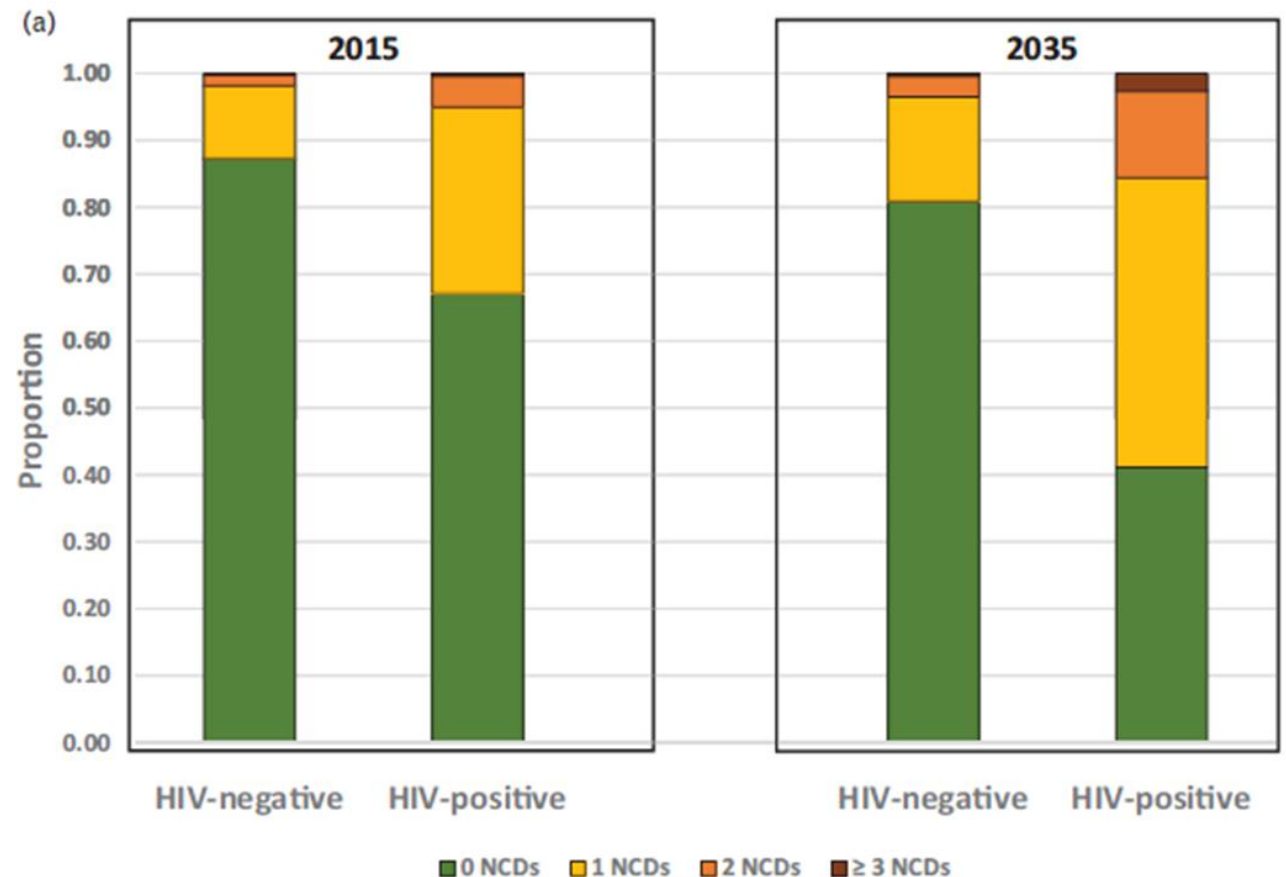
## Conséquences de la prise de poids sous ARV: Stéatose hépatique (Swiss HIV Cohort Study, n=416, 55% sous TAF)





## Prise de poids sous ARV: quelles conséquences globales?

- Enjeu majeur: >50% des PVVIH avec  $\geq 1$  comorbidité dans 10 ans en Afrique sub-Saharienne
- Impact sur recommandations OMS: TDF vs. TAF?
- Données mettant en lien prise de poids (mesures, seuils) et son impact sur la santé en Afrique SS sont nécessaires!



**Merci de votre attention!**